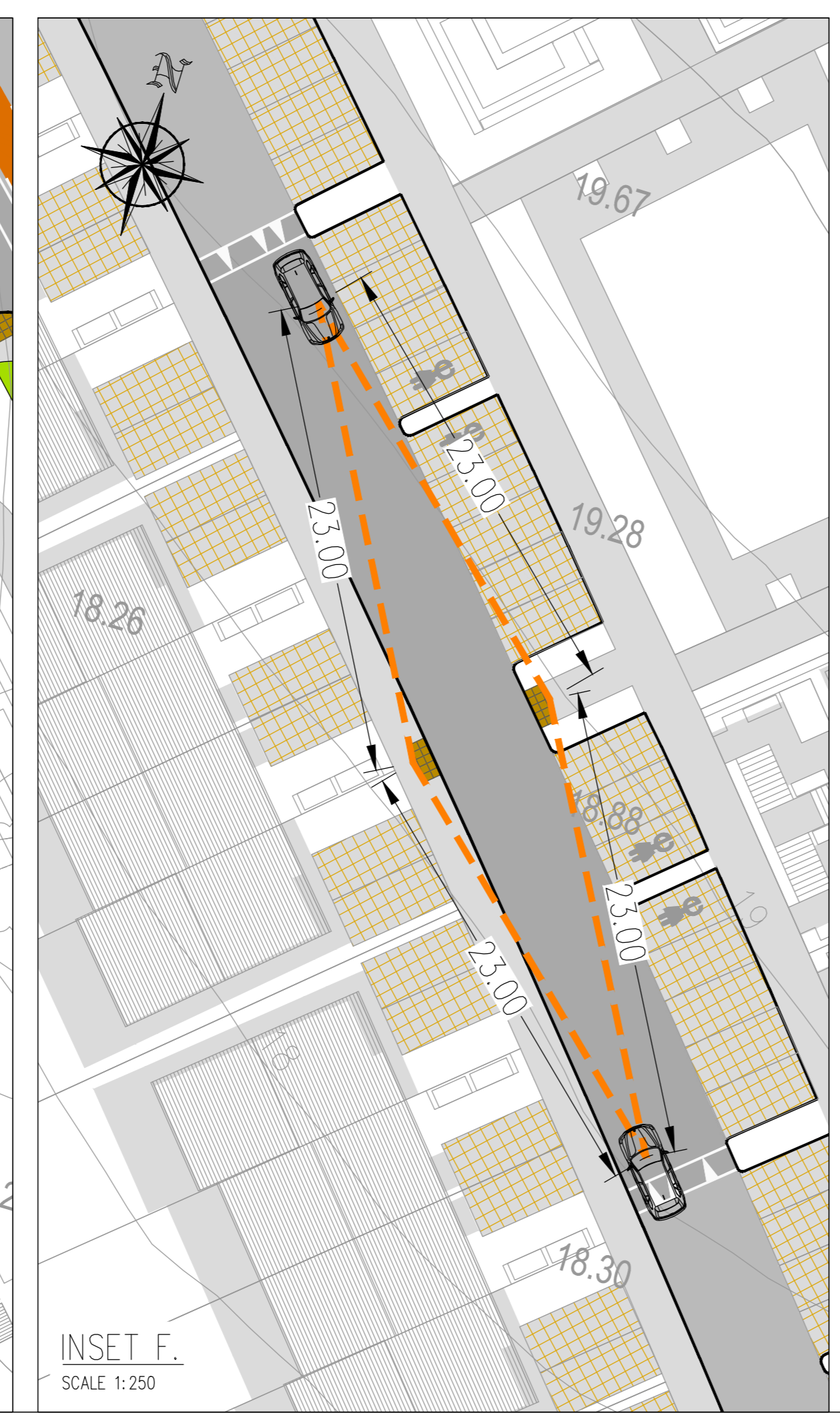
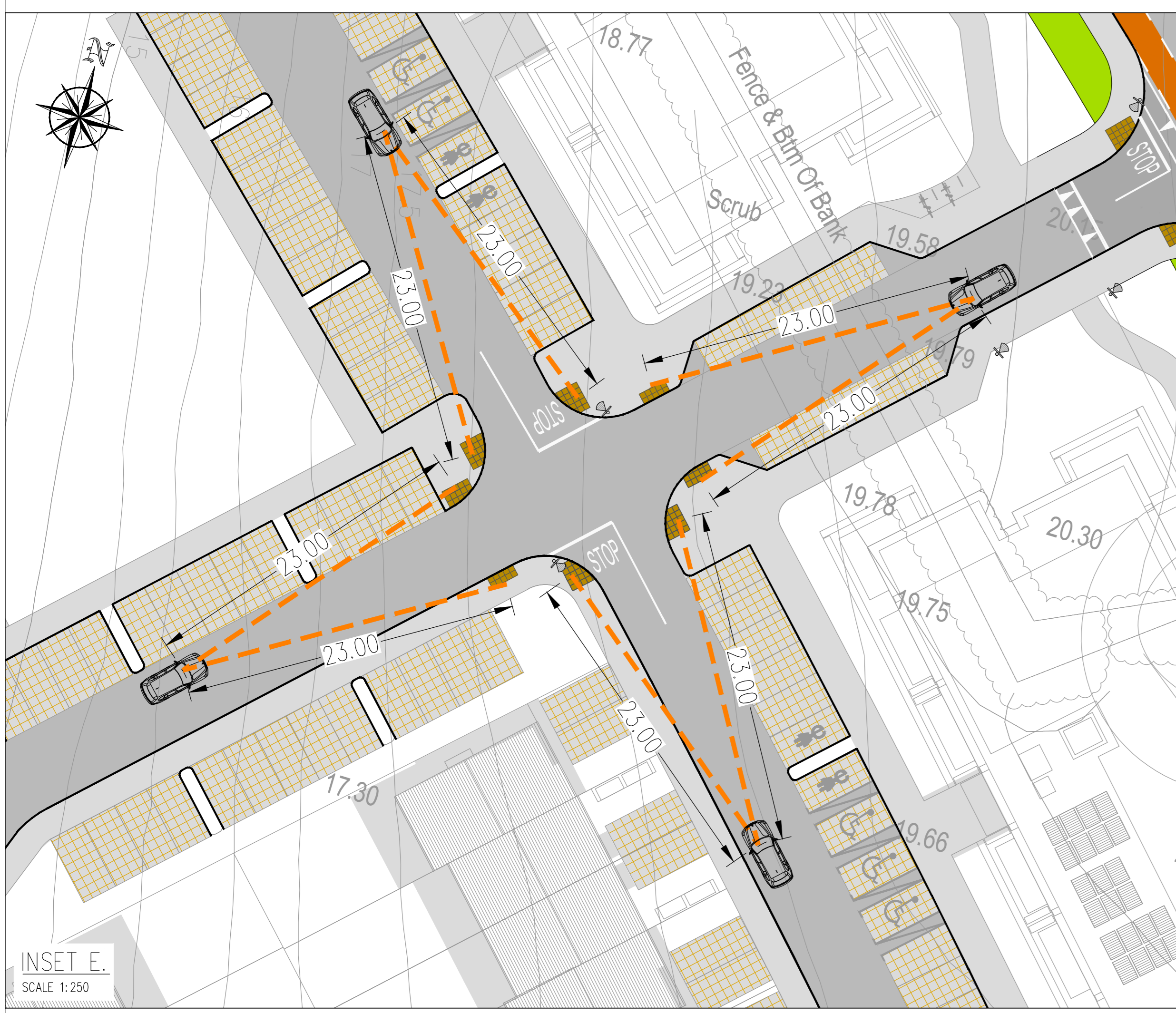
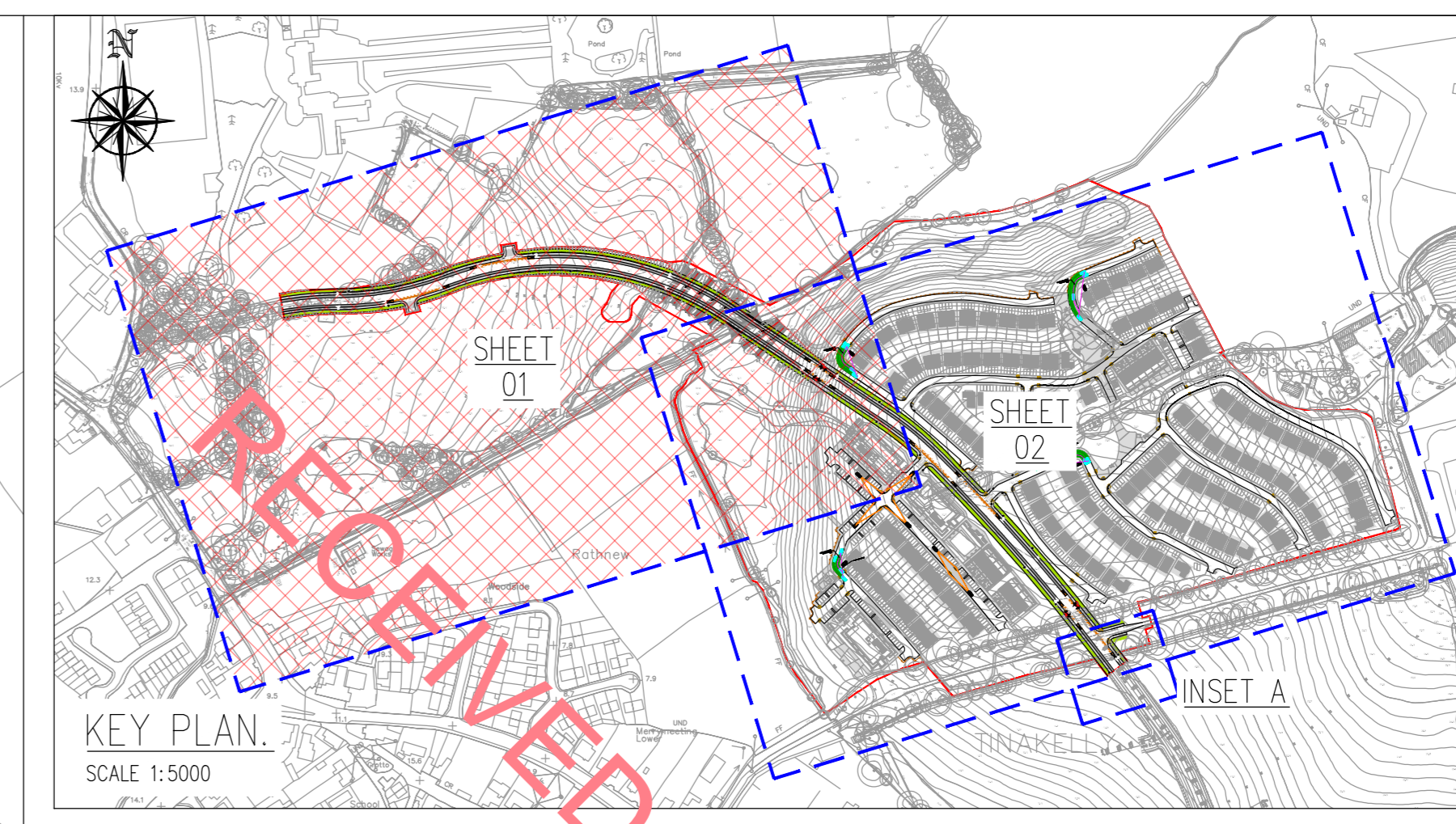




LEGEND:

SITE BOUNDARY	[Red dashed line]
PROPOSED CARRIAGEWAY	[Grey line]
PROPOSED CYCLETRACK ON-ROAD	[Orange line]
PROPOSED BRIDGE/CULVERT	[Dark grey line]
PROPOSED FOOTPATH	[Light grey line]
PROPOSED GRASS VERGE	[Green hatched area]
PROPOSED PARKING SPACES	[Brown hatched area]
PROPOSED RAISED TABLE	[Grey trapezoid]
PROPOSED TACTILE PAVING BUFF COLOURED (UNCONTROLLED CROSSING)	[Yellow dashed line]
PROPOSED TACTILE PAVING RED COLOURED (CONTROLLED CROSSING)	[Red dashed line]
PROPOSED STEEL CRASH BARRIER	[Black dashed line]
PROPOSED TIMBER CRASH BARRIER	[Brown dashed line]
CLEAR SIGHTLINE ALONG STOPPING SIGHT DISTANCE	[Purple dashed line]
PEDESTRIAN INTERVISIBILITY SIGHTLINES	[Orange dashed line]



PLANNING DRAWING.
NOT FOR CONSTRUCTION.
 ALL LEVELS GIVEN ARE
 RELATIVE TO ORDNANCE DATUM.
 THIS DRAWING HAS BEEN ISSUED FOR INFORMATION
 PURPOSES ONLY AND MUST NOT BE USED
 FOR CONSTRUCTION UNDER ANY CIRCUMSTANCES

NOTES

- For setting out refer to Architect's drawings.
- This drawing to be read in conjunction with all other Architectural and Engineering drawings and all other relevant drawings and Specifications.
- DO NOT SCALE THIS DRAWING. Use figure dimensions only.
- No part of this document may be reproduced or transmitted in any form or stored in any retrieval system of any nature without the written permission as copyright holder except as agreed.
- Ordnance Survey Ireland Licence Number EN 0074023

Rev. No.	Date	REVISION NOTE	Drawn By	Checked By
P1	11.22.2023	ISSUED FOR PLANNING	SC	NB
P2	09.08.2023	ISSUED FOR PLANNING	SC	NB

Client	Keldrum Limited
Project	Large-scale Residential Development at Tinkilly, Wicklow
Title	Quality Audit Response Sheet 1 of 2
Dep. No.	A034-CSC-ZZ-XX-DR-C-0051
Date	July 2023
Drawn By	SC
Checked By	NB
Scale	OS 1:500 @ A0
Revision	P2

CS Consulting Group
 DUBLIN | LONDON | LIMERICK
 Head Office
 19-21 Dame Street, Dublin 2.
 T: +353 (0)1 5480863
 e: info@csconsulting.ie
 w: www.csconsulting.ie

Quality
 Environment
 Energy
 Health & Safety

ISO 9001:2015
 ISO 14001:2015
 ISO 45001:2018
 OHSAS 18001:2007